

MGA Battery Access Hatch Fastenings

Do you have difficulty opening and closing those Dzus fixings when checking your battery? It's a process that involves crouching at an awkward angle behind the seats and prodding a screwdriver into a 50 year old slotted screw head. Now you can change to a modern version of the Dzus ¼ turn fastener which is operated by hand. The handle folds flat after closing so does not intrude into the space where the hood is stowed when folded.

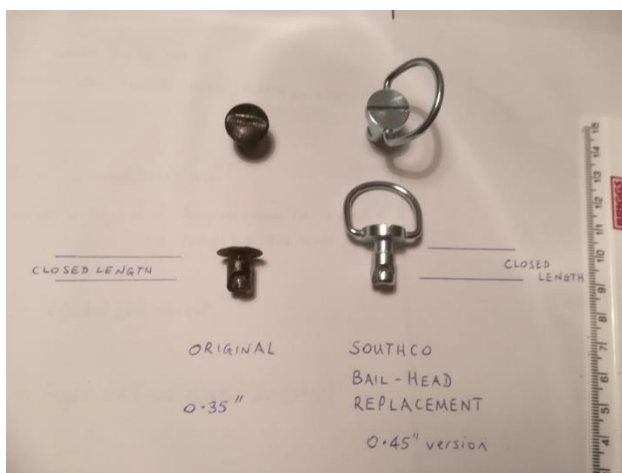


These are produced by **Southco** at Touch Point, Wainwright Road, Warndon, Worcester, WR4 9F. 01905 346795.

Go to <https://www.southco.com> and key in D4 in the website search box (top right) it takes you to the first DZUS menu. Look for part No. D4-BJR 5-45 on page 39 of the catalogue. Two of these numbers are important when ordering for your MGA.

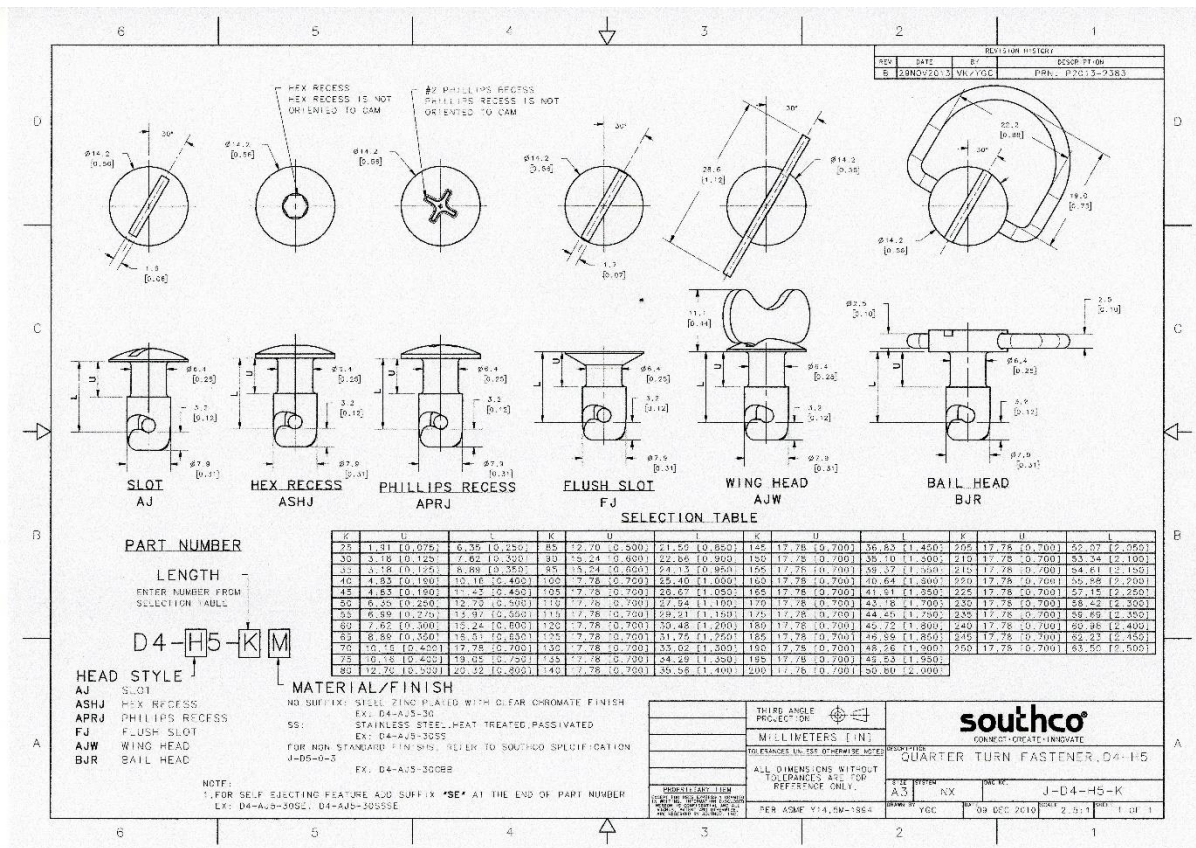
5 is a CODE for the diameter of the pin, 7.9 mm for the main pin, and 6.4 mm at the shoulder where it goes through the battery cover.

45 is 0.45" the CLOSED length of the fastening, the distance from underside of head to the top of the slot.



0.45" was fitted ok by those owners who contacted the Register with the idea to promote the fastenings through our online shop. However, some cars need a shorter, 0.35" length, (or you could fit a washer under the head to stop the cover from rattling).

Southco offer a range of lengths, their specification table is on the next page



Removal of the old fasteners requires skill and patience to avoid damage to the paintwork of the battery hatch. Try pulling them out like teeth using a pair of mole grips, or lay the hatch upside down on a protective surface and carefully tap them out with a soft hammer. Apply grease to the new fasteners before pressing them in place and also grease the captive wire which locates with the Dzus before it turns to lock.

In January 2019, David de Saxe reported on his experiences with Southco.

Southco, who supply the bail-handle Dzus fixing screws, were extremely helpful when I contacted them, but were out of stock of the shorter length (ref 35) screws. They sent me the intermediate size (ref 40), together special washers made of a clear plastic material which, when fitted under the screw head, reduce the fitted length to the 9mm that I believe is the standard spec and which most A's will require.

Removing the old Dzus fasteners from the cover panel is a bit of a pig and I had to resort to some filing down of the barrels, but the result of fitting the Southco bail-handle screws to both my 1500 and 1600 is most satisfactory. The Southco item seems to be a highly precision product.

The MGA Guru web site also covers this topic at
<http://mgaguru.com/mgtech/interior/int101c.htm>

An alternative supplier of Dzus fasteners is <https://www.speedyfasteners.com/>

The original slotted type is available from Moss. Part no. AHH7210

Thanks to Graham Howell, Alan Whitfield, Brendan Leach and David de Saxe for their help with this topic.